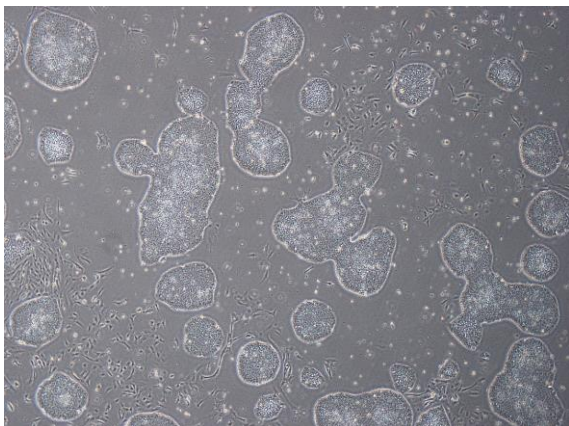
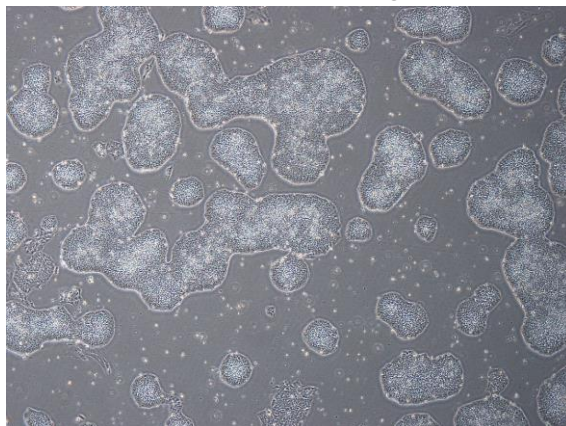


【 CiRA-j-1195 】 Morphology of iPSC colonies

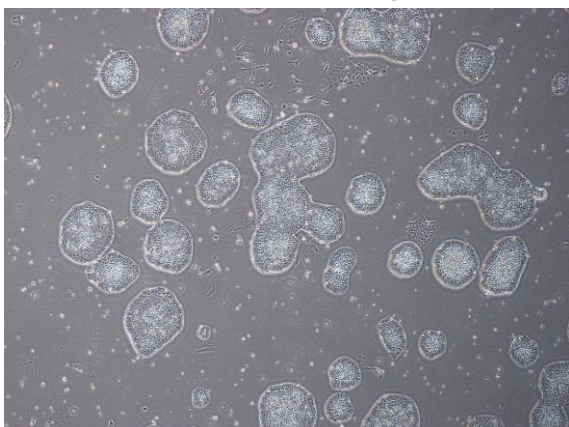
CiRA-j-1195-A: passage-2



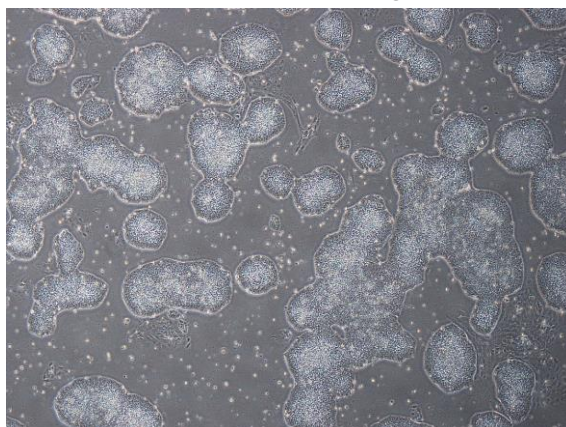
CiRA-j-1195-B: passage-2



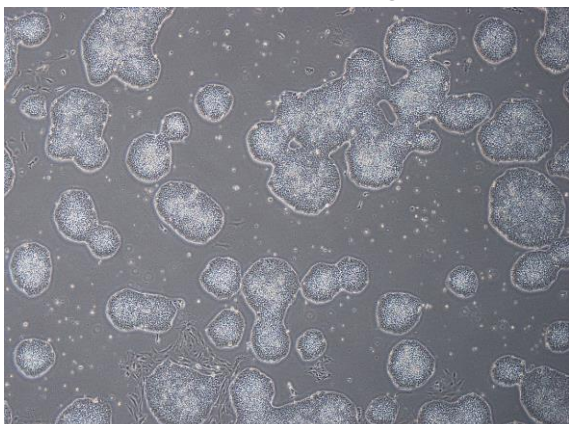
CiRA-j-1195-C: passage-2



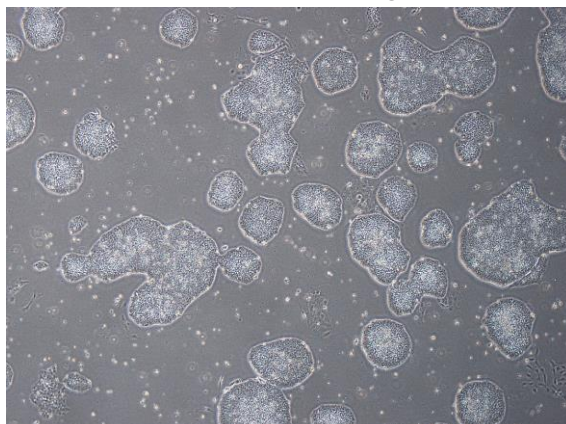
CiRA-j-1195-D: passage-2



CiRA-j-1195-E: passage-2



CiRA-j-1195-F: passage-2



(All images were captured at 4x magnification)